

EXPANSION JOINTS – SMALL MOVEMENTS

GRANOR® FERMASEAL SERIES “FE”

GRANOR® FERMASEAL Series “FE” seals are extruded from a high quality EPDM Elastomer having extremely good resistance to both UV and ozone. Suitable for sealing applications, frequently vertical, between concrete, steel or aluminium faces. Careful selection of the most appropriate seal for the intended application is important as the small sizes have limited expansion capacity.

APPLICATION

Typically used as a ‘joint’ filler in horizontal or vertical expansion gaps in concrete structures, the ‘fin’ type design assists in retaining the seals in the gap with or without the aid of a lubricant / adhesive.

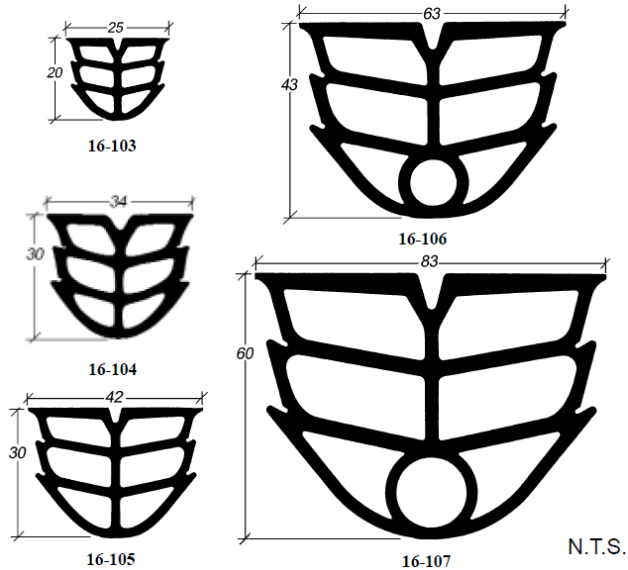
INSTALLATION

Correct gap dimensions are important. The gap should be of correct and uniform width throughout, smooth, parallel and free from projections and or cavities. Any sharp edges must be chamfered. The use of a lubricant / adhesive although recommended, is optional when installing FERMASEAL.

COLOURS

Standard colour is black.

Alternative colours such as grey manufactured from a TPV (Thermoplastic Vulcanizate) rubber, are available to order.



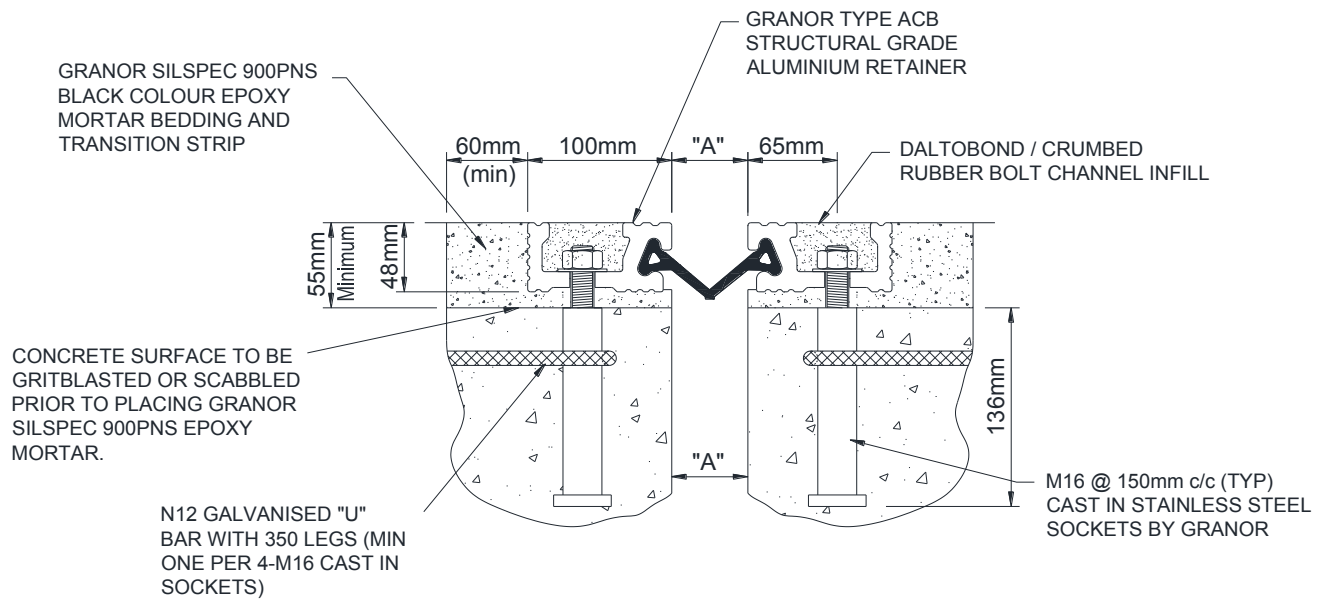
Seal Part No.	Joint Opening Gap (mm)			Typical Gap Width for Installation (mm)	Typical Groove Depth “D”
	Seal Minimum	Seal Maximum	Total Seal Movement Capacity		
16-103	11	19	8	15	30
16-104	15	25	10	20	40
16-105	19	31	12	25	45
16-106	25	45	20	35	70
16-107	30	60	30	45	90

GRANOR® AUSFLEX SERIES – “ACB STRIPSEAL”

NEW WORKS DETAIL

STANDARD DETAIL - NEW WORKS

Granor ACB bolted-in aluminium strip seal expansion joint system.



ACB EXPANSION JOINT TABLE

PART No.	Movement Range min. to max. (mm)	Min Installation Gap Width "A" (mm)	M16 Stud Spacings (nominal)	Seal Type	Seal Profile
ACB-100D	0 - 100	38	150mm	100D	
ACB-125D	0 - 125	38	150mm	125D	Type "D"
ACB-100F	20 - 125	40	150mm	100F	 Type "F"

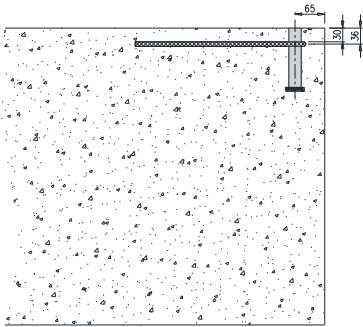
Note: wider Initial Gap Widths ("A") can be used provided the joint movement range will not be exceeded.

GRANOR® AUSFLEX SERIES – “ACB STRIPSEAL”

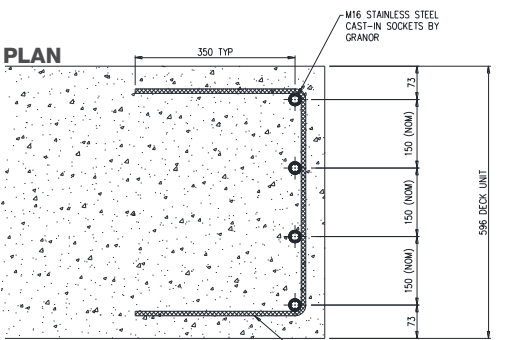
PSC DECK UNIT SOCKET DETAIL (DECK SLAB SOCKET DETAIL SIMILAR)

CAST-IN SOCKET DETAIL

ELEVATION

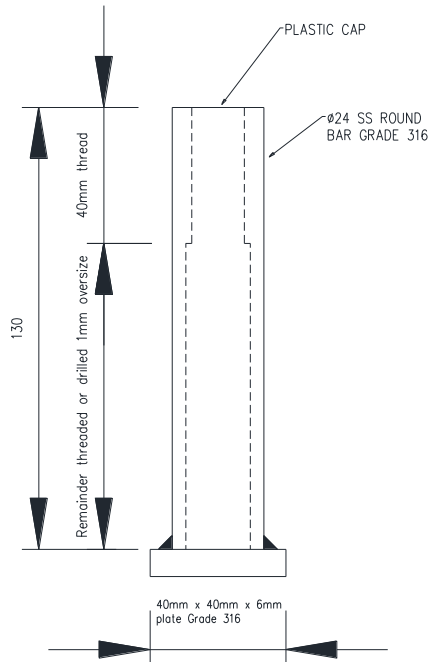


PLAN



Note: positioning shown is typical only and may be adjusted by PSC Precaster as necessary.

N12 GALVANISED "U" BAR TYPICAL (ONE PER 4-M16 SOCKETS) OR SIMILAR TO PRECASTERS DETAIL



M16 STAINLESS STEEL CAST-IN SOCKET
No. OFF = ___

RETROFIT DETAIL

STANDARD DETAIL - RETROFIT

Granor ACB bolted-in aluminium strip seal expansion joint system.

