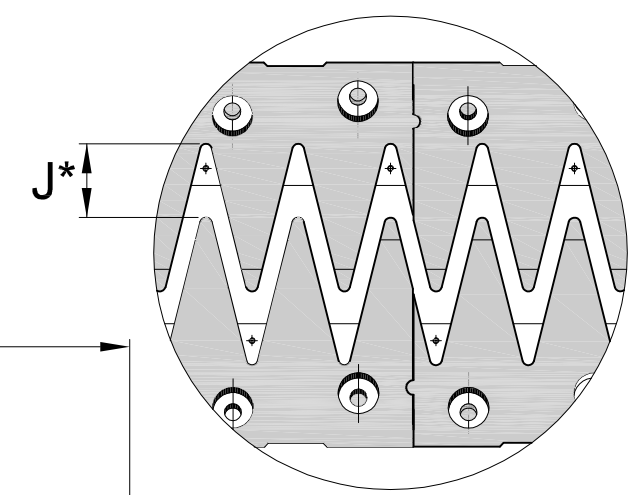
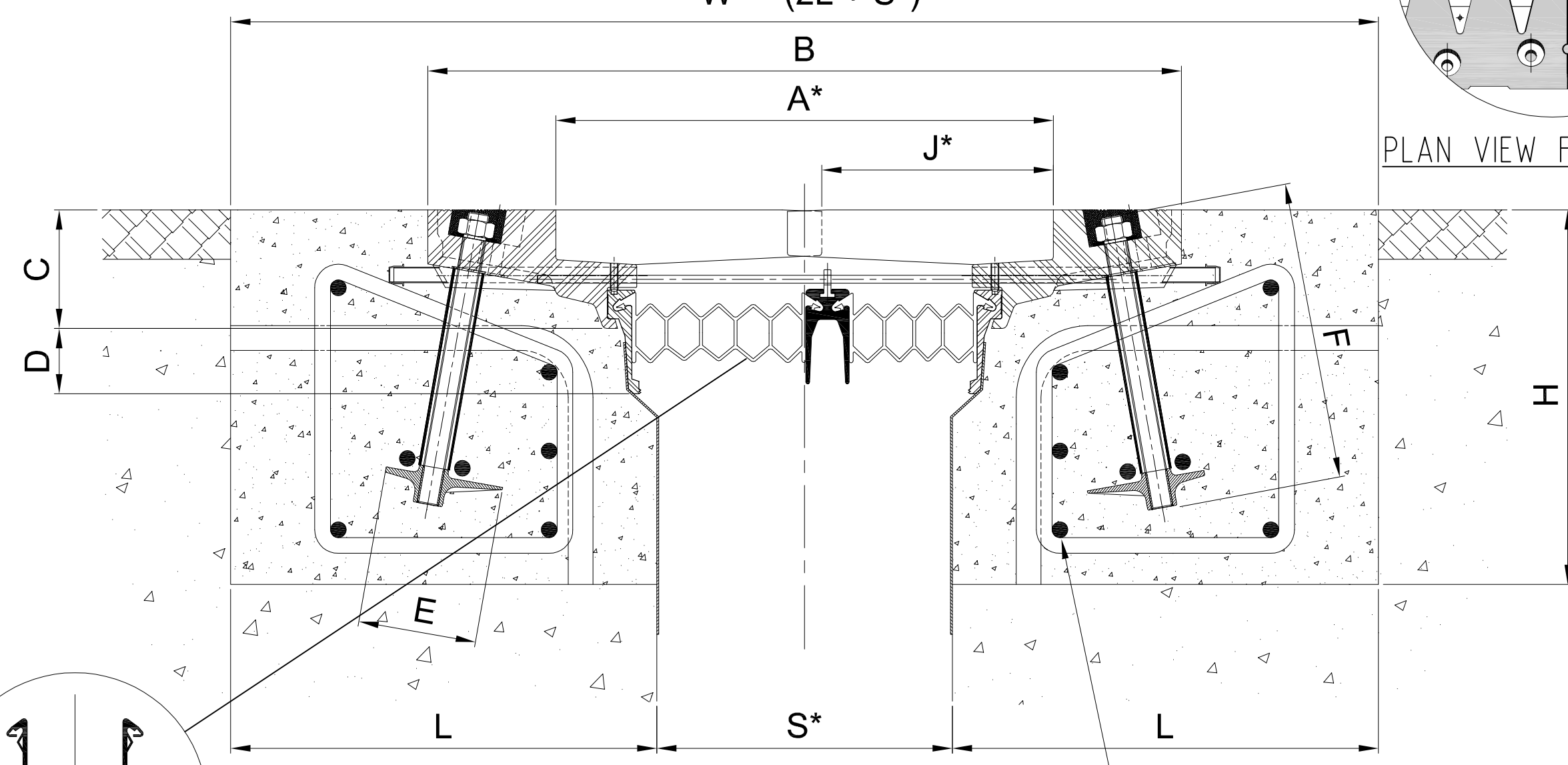


Type	A*		B		S*		J*		C	D	E	F	H	L
	min.	max.	min.	max.	min.	max.	min.	max.					min.	
EJ200	200	400	420	620	50	250	0	200	113	59	120	250	310	350
EJ250	250	500	510	760	50	300	0	250	120	59	120	300	360	400
EJ300	300	600	600	900	50	350	0	300	133	59	120	300	360	450

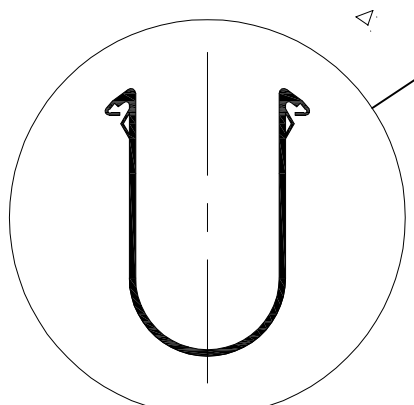
"W" = (2L + S\*)



PLAN VIEW FINGER GAP



NOTE: THE DETAILING OF THE STEEL REINFORCEMENT IS TYPICALLY DONE BY THE CONSULTANT TO SATISFY GOVERNING ROAD AUTHORITY REQUIREMENTS



ALTERNATIVE DRAPE SEAL

NOTE: ONE DRAPE SEAL GLAND REPLACES THE CENTRAL CONCERTINA SEAL AND ALUMINIUM CURTAIN RAIL ARRANGEMENT.

## GRANOR ETIC EJ EXPANSION JOINT SYSTEM

SECTION - FIGURE -.-.-(-)

- A\* (min.) - Is when the fingers are fully closed up. A\* (max.) - Is when the fingers are fully open.
- J\* - Is the critical metal to metal gap between the ends of respective assembled joint components, at the time of installation, as determined by the engineer after consideration of future opening and closing of the fingers.
- S\* (min.) - Is the minimum acceptable gap when fingers are fully closed up.
- S\* (max.) - Is the minimum acceptable gap when fingers are fully open.